

Using Instruction Bandimex Pocket Tool W 101

- Band + Buckle -

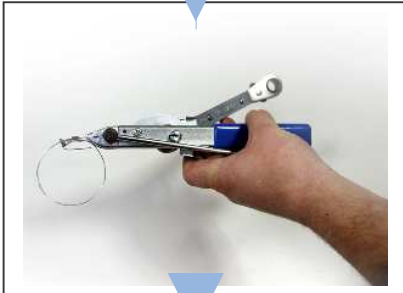


Cut off adequate band from roll 1/4" or 3/8" Bandimex band by opening the slot in the head of the tool with the cut off lefer at right angels to the tool. Thread the band through the slot and cut.

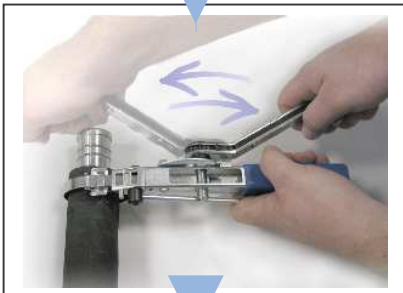


Form a clamp by threading the band through buckle and make a fold under the buckle.

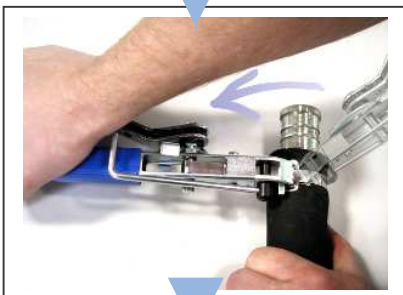
Note: For extra strength double-wrapped band is recommended.



Insert tail of clamp into head of tool and slide into slot of winding mandrel.



Depress locking pawl and tension clamp with forward strokes of the ratchet wrench.

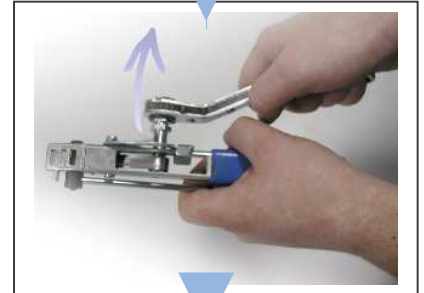


When sufficient tension has been applied, release locking pawl and rotate tool over object being clamped.

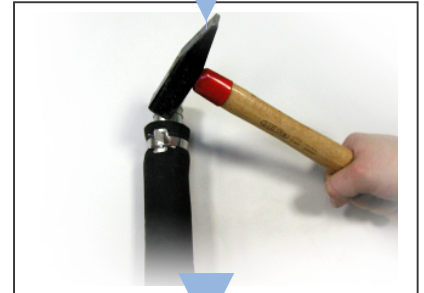


Cut off excess band by lifting cutter lever.

Remove band wrapped around winding mandrel by lifting up on locking pawl and withdraw tensioning wrench from tool.



Hold stub of band with thumb, hammer it flat over bridge of buckle, complete clamp by hammering ears over stub.



That's it!



bandimex
BEFESTIGUNGSSYSTEME
Dortmunder Str. 7a
57234 Wilnsdorf
Tel.: 02739-8703- 0
Fax: 02739-8703-22
info@bandimex.de